

THE REMU-TALKER

Wild Kiwi Day Sponsors

Thank you to the following businesses and organisations who are supporting our whānau day:

- ▶ Placemakers Seaview - prizes, wood, paint and brushes for wooden lizards & kiwi
- ▶ Wainuiomata Menz Shed - made wooden lizards & kiwi
- ▶ Ecoware- composting cups
- ▶ Hutt City Council Community Engagement Funding
- ▶ Village Accommodation - Wild kiwi T Shirts
- ▶ Clive's Chemist - gift vouchers
- ▶ Countdown Wainuiomata - Apples
- ▶ Puhaka Mt Bruce National Wildlife Centre - family pass
- ▶ Wellington Zoo - family pass
- ▶ Zealandia Ecosanctuary - family pass
- ▶ Department of Conservation - Haurangi Hut 1 night stay
- ▶ Goodnature - A24 rat trap & bait
- ▶ Interislander - \$200 travel voucher



In celebration of 30 years of dedicated conservation work in the Remutaka Forest Park the Remutaka Conservation Trust is hosting a very special family day.

We would love you and your whānau to pack a picnic and join us in this beautiful space we have right in our own backyard. Home to wild kiwi, beautiful bush and thriving native flora and fauna.

There will be crafts, games and face-painting as well as a visit from Rimu the Kiwi, live lizards, storytelling and guided bush walks.

An EPIC Raffle will be drawn on the day. Tickets are \$2 and can be purchased on the day.

1st prize: \$200 Interislander voucher, Family pass to Pukaha Mount Bruce, Family pass to Wellington Zoo.

2nd prize: Goodnature A24 trap, Family pass to Zealandia, \$20 Clive's Chemist voucher.

3rd prize: One night in Haurangi Hut (for up to 10 people), a sleeping bag, two torches, \$20 Clive's Chemist voucher.

Funds raised from the day go to new signs on the Nga Taonga nature trail.

Sunday 9th December, 10am - 2pm, See you there!

Kiwi Update

It has been nearly eleven months since the Trust completed our Operation Nest Egg (ONE) in January of this year. ONE is when kiwi eggs are removed from their burrows and kept in special facilities until big enough to fend for themselves.

Over the weekend of the 24th November our final three chicks returned to the Remutaka Forest Park. The birds have been at Wairakei International Golf course in Taupo. This amazing golf course has invested in developing a sanctuary for conservation by placing a predator-proof fence around the course. Their care has been supported directly by the partnership Wairakei developed with the Department of Conservation. We would like to particularly thank Jeff and Renee for their support and care of the birds.

The Trust would also like to thank the families who have sponsored these birds, this work is possible due to your support.

The ability to return these chicks to the park is also thanks to the volunteers who monitor the traps in the Park and track the existing kiwi population.

One of the three birds released hatched on the 15th January 2018 weighing in at 280 grams. At the time of release she was a hearty 1582 grams.

She still needs to learn that tucking under a person's bent legs, while they are sitting down, does not constitute a burrow!



Volunteer Profile

John Cranefield is one of those behind-the-scenes volunteers who has made a huge impact on the viability of the Trust. For the past seven years John, a chartered accountant, has managed the finances of the Trust. Without high quality audited accounts our ability to maintain our charitable status and apply for and obtain funds would be that much harder.

We would like to extend a huge thank you to John for his tireless service. Enjoy your extra time with your grandkids and travelling overseas.

We welcome our new treasurer Karen Baker, an existing volunteer with the Trust.

Daytime Bird Call Survey

The acoustic recorders are out all over the park right now as part of our annual diurnal (daytime) bird survey. If trappers notice a strange looking device hanging from a tree, that'll be us. Since they only record between 7am to 7.30am each day, no-one needs worry that we're eavesdropping on them (unless they are up with the birds!)

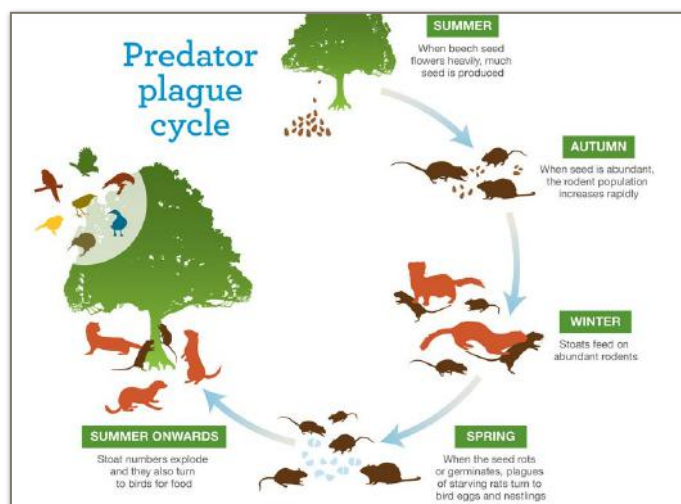
An updated report on diurnal bird call rates will be available next year once we download and analyse the data.

Preparation for Mast Year

Next year predictions indicate we are heading for another mast event, some say, bigger than the previous mega mast of 2014.

We are currently investigating what options we may have in our armoury, against the pests, during a mast year given the high cost (money and resources) involved in monitoring chicks at the nest or removing eggs from the nest.

We believe our trapping network is effective during 'normal' pest years, trapping sufficient rats and stoats, to ensure kiwi chick survival we just need to ensure we have a means to do the same during a mast event.



Mukamuka Munter Race

The 32km Mukamuka Munter trail run was held at the Remutaka Forest Park on Sunday 19th August. The route highlights some of the Park's stunning scenery starting at the Orongorongo River mouth, along the coast, up and down rugged rocky valleys and through native bush to the finish at the visitor centre.

Congratulations to Sam Hansby who placed first overall and Rachael Shackleton as first female. We would like to thank organiser Chris Martin and the participants for their donation to the Trust. The money received will go towards extra traps and bait for our predator control program.

From the Archives

Pre kiwi release days, regular meetings and robust debates at Susan's house to work through the details needed to successfully translocate kiwi back into the park.

Planning and more planning!! A few members of the kiwi project team seated on Susan's front steps circa 2004.



John Rush, Melody McLaughlin, Bill McCabe (Trust President) Susan Ellis & Rus McStay.

Sponsorship support

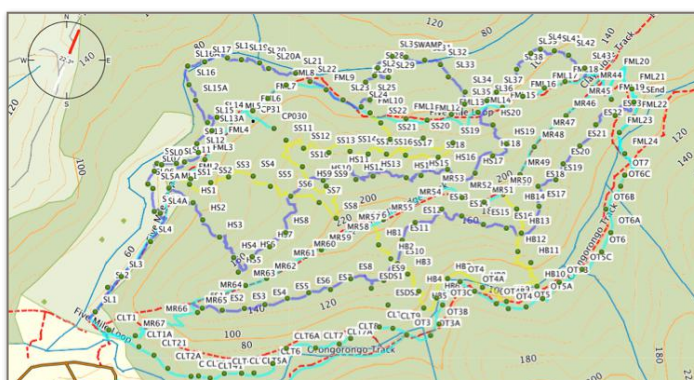
Without the support of our individual, corporate and community sponsors our work would not be possible. Recent support includes:

- ▶ Pharazyn Trust gave a generous donation for our trapping network
- ▶ ENHANCE IT SOLUTIONS for promotional material using our new logo
- ▶ Placemakers Seaview provided batteries for acoustic recorders
- ▶ Pak n Save Petone for our annual volunteer & supporters BBQ

Catchpool Eco Hotspot

On November the 10th, a team of volunteers undertook the deployment and baiting of the Eco Hotspot trap-lines, installing self re-setting A24s and DOC200 rat/stoat traps. This is part of the Joining the Dots (JTD) project to increase pest control in smaller manageable forest area to create a safe area for the smaller critters in the park, such as lizards and invertebrates while still supporting the Trust's overall vision of a self sustaining kiwi population.

The Eco hotspot complements the pest control already done by the trappers in the Dawn Chorus Project which targets all pest species.



Catchpool Working Bee

The local Department of Conservation ran a working bee in the Catchpool during the week commencing 26th November. This was to focus resources, both the Departments and any volunteer keen to help, in sprucing up the facilities ready for the summer rush. Teams from the National Office and District office were out in force banishing paint brushes and sanding machines in addition to planting out the area by the Catchpool Centre.



Kiwi Christmas

Forget socks and undies this Christmas, give your loved ones a wild gift with purpose! Sponsor a wild kiwi in their name and receive:



- ▶ A personalised certificate
- ▶ A photo of the kiwi
- ▶ Info about the kiwi
- ▶ Annual update on your kiwi
- ▶ Trust newsletter subscription
- ▶ Tax donation receipt (We are a registered charity)

It costs just \$50 a year to sponsor a kiwi. This helps us to care for and track them. It also helps us to train and equip our volunteers.

Contact sponsors@remutaka.nz to order by 18th December and receive your pack by Christmas.

For other sponsorship options check out www.remutaka.nz/about/sponsors.htm

Wishing our all our volunteers, sponsors and supporters a wonderful Christmas and a safe and peaceful New Year!

Our Sponsors

Thank you to the following businesses and organisations as well as all of our kiwi, trap and tree sponsors for their continued support

The image displays a grid of logos for various sponsors. The logos include: Hutt City (Te Awa Kairangi), Wellington Community Trust (supporting community initiatives), Village Accommodation Group, Department of Conservation (Te Papa Atawhai), William Noel Pharazyn Charitable Trust, hutt mana CHARITABLE TRUST, PlaceMakers (Know how. Can do. HUTT CITY), Four Winds FOUNDATION, WILDBASE RECOVERY, PROJECT CRIMSON (renewing pohititakawa and rata), Te Runanganui o Taranaki Whanui (Nau mai, haere mai, Kia mau ki to Maoritanga), CALTEX, NIKAU FOUNDATION, ENHANCE IT SOLUTIONS, Flyrite – Rimutaka Heli Services, tumbledweed T-SHIRTS FUNDING CONSERVATION, PETONE PAKnSAVE, WWF, and EMBASSY OF THE UNITED STATES OF AMERICA.